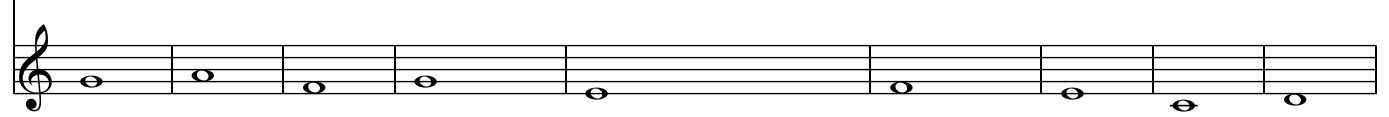
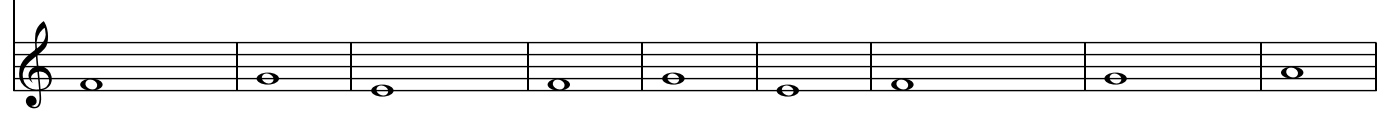
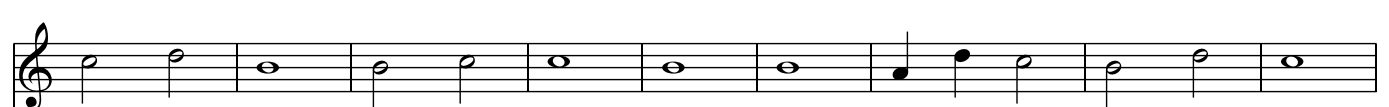
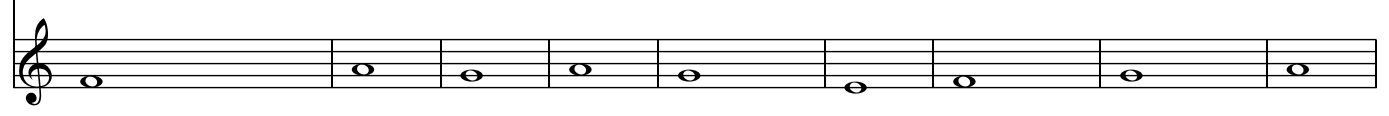
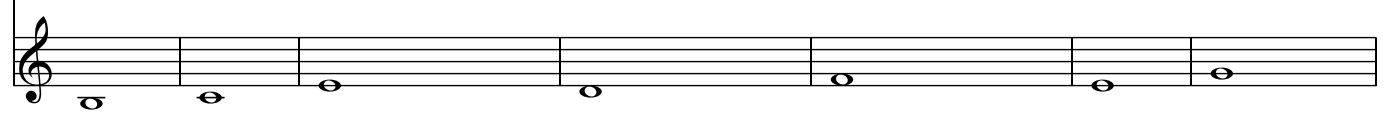
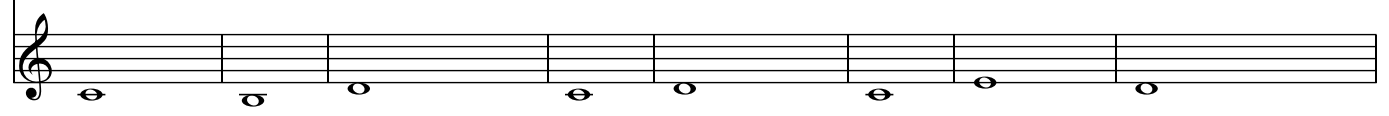
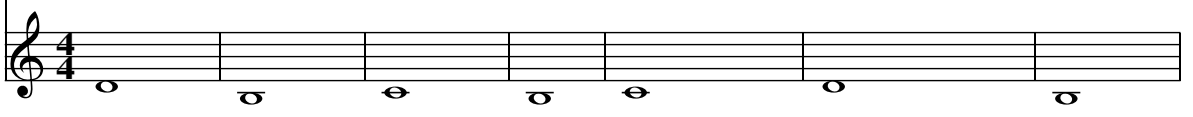


♩ = 200

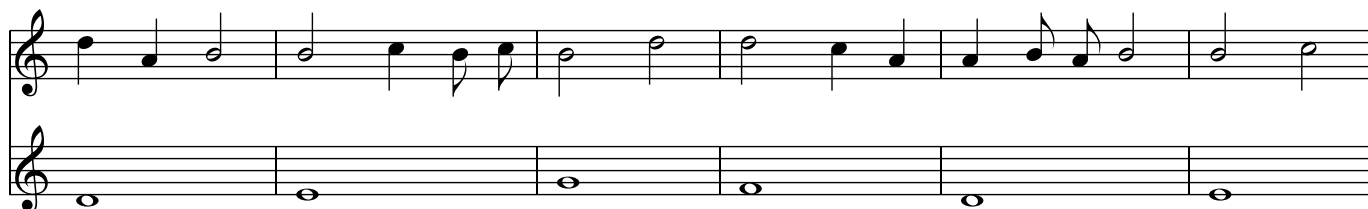
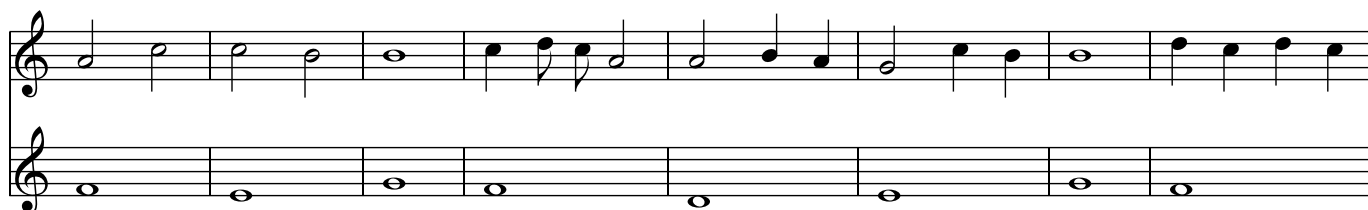
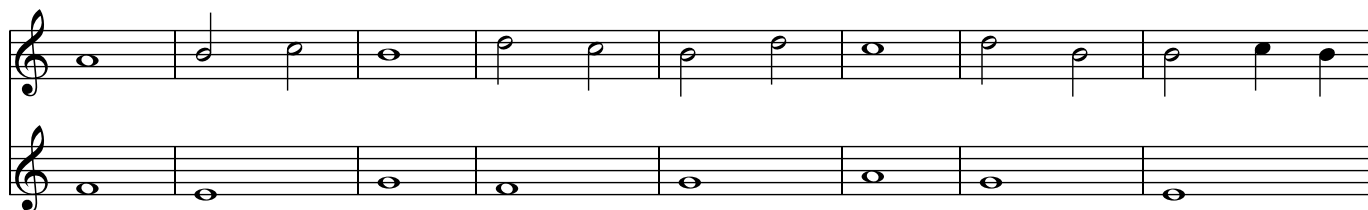
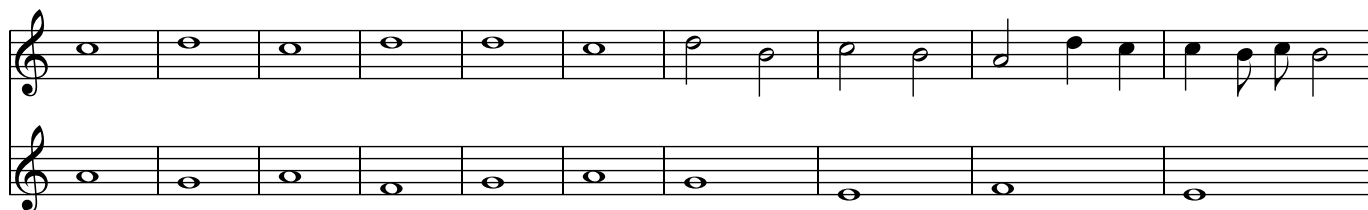
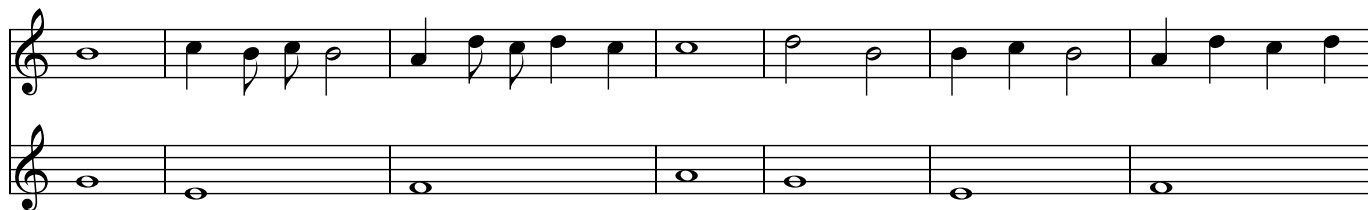
Contrapunctus

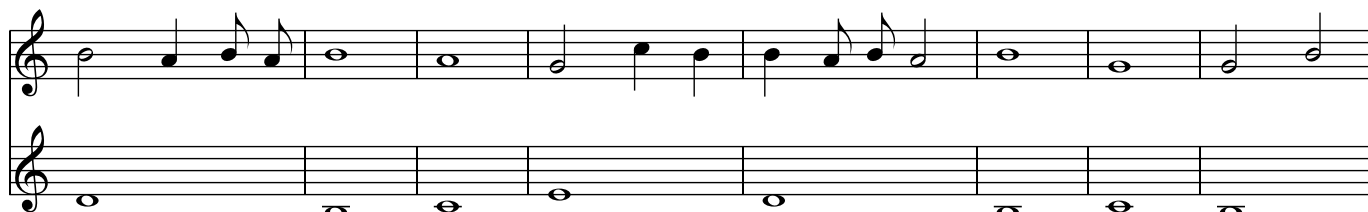
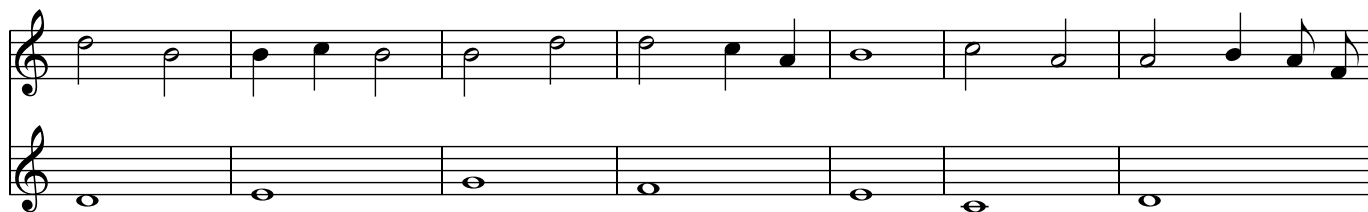
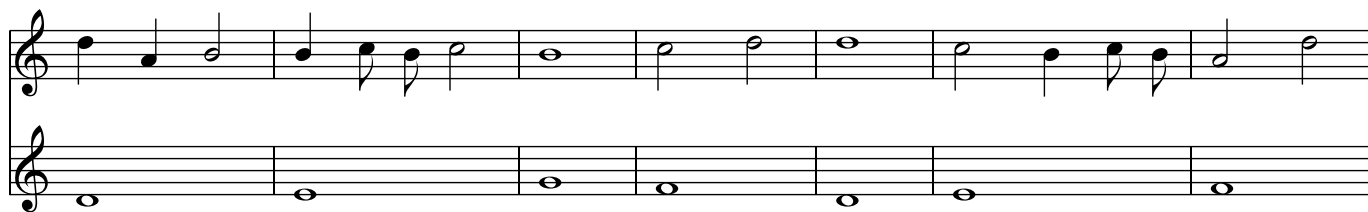
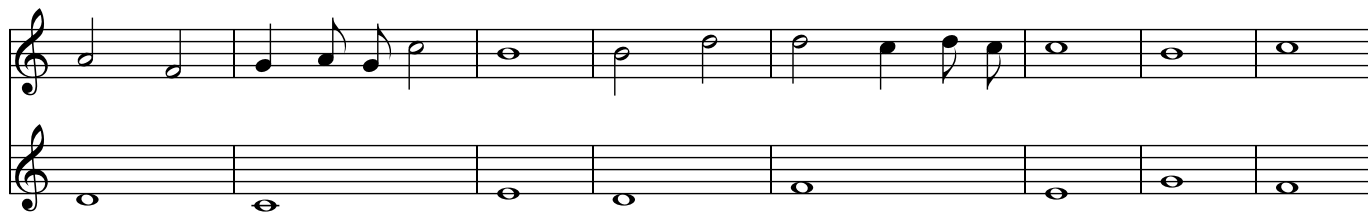
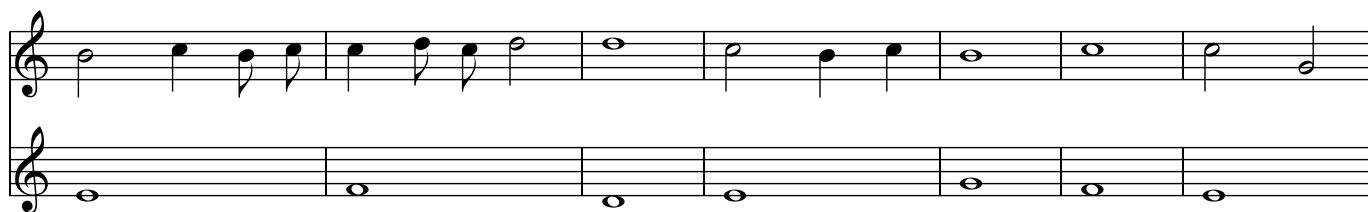


Cantus Firmus









The image displays a musical score for a 12-part choir, organized into 12 staves. The notation is written in a single system. The key signature is one sharp (F#), and the time signature is 4/4. The music is arranged in a way that suggests a complex, multi-part setting of a hymn or a similar religious piece. The notation includes various note values (quarter, eighth, and sixteenth notes), rests, and bar lines. The staves are numbered 1 through 12, indicating the different parts of the choir. The music is written in a way that suggests a complex, multi-part setting of a hymn or a similar religious piece.